



Leicester
City Council

WARDS AFFECTED
Spinney Hills

FORWARD TIMETABLE OF CONSULTATION AND MEETINGS:

Cabinet

12th May 2008

Spinney Hill Park Heritage Lottery Fund Grant Application

Report of the Corporate Director Regeneration and Culture

1. PURPOSE OF REPORT

- 1.1. To provide an update on the application to the Heritage Lottery Fund (HLF) for a grant to help restore Spinney Hill Park. To advise of success at the initial stage of the application and to request approval for further development work for the second stage application.

2. SUMMARY

- 2.1. Cabinet of 5th September 2006 gave approval for an application to the HLF for a grant to help restore Spinney Hill Park. At the same time it identified match funding to support the application. This match funding consisted of £120,000 from the sale of land to Leicestershire Constabulary for the Spinney Hill Park Local Policing Unit and £420,000 from the 2007/08 capital programme.
- 2.2. The HLF funding programme has a two-stage application procedure. An application was submitted in September 2007 for the first stage of this procedure. This has now been assessed by the HLF and they have approved our first stage application.
- 2.3. With this approval the HLF allocated the funds that were applied for. To release these funds a second more detailed application has to be submitted. This report seeks Cabinet's approval to instigate this next stage of development work and subsequent second stage application to the HLF.

3. RECOMMENDATIONS

- 3.1. That Cabinet approves work on the development of and submission to the HLF of the second stage application for the Spinney Hill Park project.
- 3.2. That the identified match funding remains committed to support the project

4. REPORT

- 4.1. At the Leicester City Council Cabinet meeting of 5th September 2006, approval was given for the Parks and Green Spaces Service to prepare and submit an application to the Heritage Lottery Fund / BIG Lottery Parks for People programme for a grant for the restoration of Spinney Hill Park. The completed application was submitted on Friday 28th September, the final date for submission under the current funding round.
- 4.2. The HLF's Parks for People funding stream gives grants of up to £5,000,000. Any grant has to be matched with at least 25% funding from the applying body. The funding stream has a two stage application procedure. An outline application is made at the first stage, which if successful, allows the HLF to allocate the requested grant pending a successful detailed second stage application.
- 4.3. The grant requested from the HLF will be used to restore the park's Victorian Heritage, provide new and improved features and facilities and to provide a dedicated member of staff to work with park users and the local community.
- 4.4. The specific proposals that form the basis of the application were, in large part, derived from the extensive public consultation that took place during the Stage One development period. During spring and summer of 2007 members of the Friends of Spinney Hill Park and staff from Park Services distributed consultation forms to a variety of organisations and groups within the community surrounding the Park, (associated research identified that 80% of the Parks visitors lived within 1km of the Park) they also carried out face to face consultation with members of the public both within and outside of the Park. In total 359 completed forms were returned.
- 4.5. The analysis of the consultation results provided various information about the local community's uses and views of the park, the tables below set out the 5 most significant responses to two key questions:
 - a) Reason for visiting the Park?
 - b) What would make you visit the park more often?

Table 1: Reasons for visiting the park

Reason	Number	% of respondents
To go for a walk	183	56%
To enjoy nature or get fresh air	147	45%
To let children play	106	33%
For peace and quiet	103	32%
To meet up with friends	103	32%

Source: DBA Consulting, 2007

Table 2 What would make you visit the park more often?

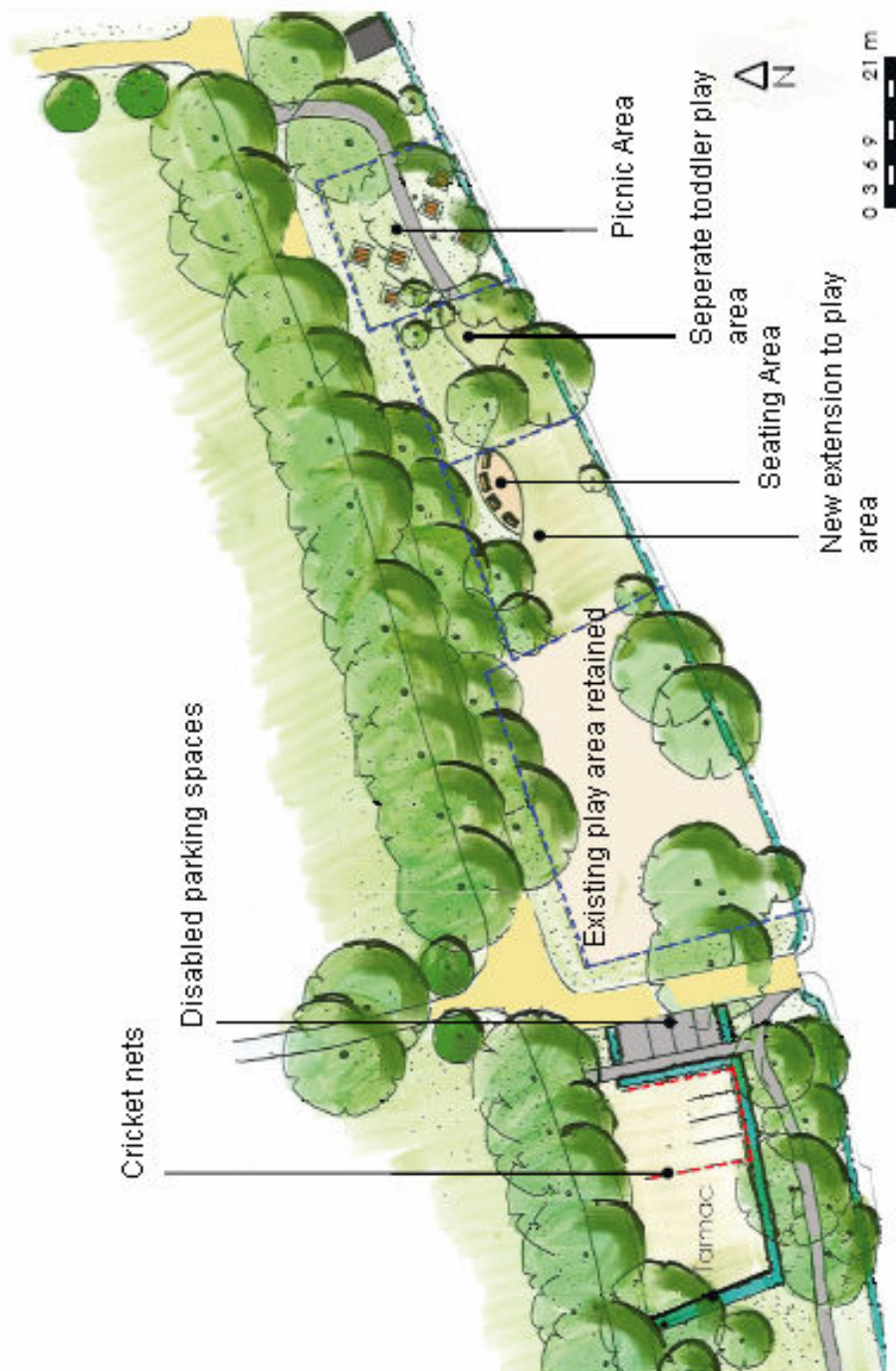
Reason	Number of Comments
Children and play	62
Activities and events	51
Wildlife and nature	49
Seating	44
Refreshments	41

Source: DBA Consulting, 2007

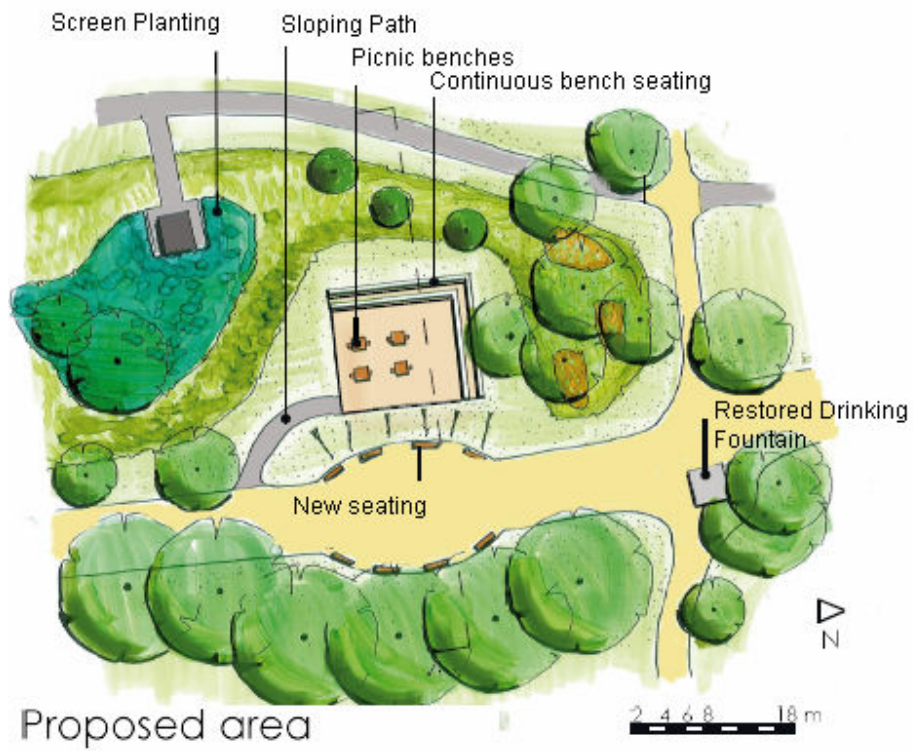
- 4.6 Many comments were received about children and play. In particular, there were many requests for the improvement and enlargement of the existing play areas. A substantial number of the respondents also mentioned events and activities ranging from an ice rink to a mela. There were many comments about nature and wildlife, many simply requesting more flowers. Many respondents mentioned seating, either asking for more benches or for dedicated seating areas. There were lots of requests for refreshment facilities and for clean toilets. Some respondents also raised concerns about safety and security, and suggested more staff on the park. A number asked for improved or increased sports facilities. Other areas suggested for improvement included cleanliness and maintenance issues, problems with dogs and dog mess, lack of parking and poor paths and surfaces.

4.7 Listed below are the major outline proposals, within the Stage One application, which were derived from the public consultation described above.

- A) Amalgamation of the two separate play areas into a single extended facility with associated seating and picnic area.



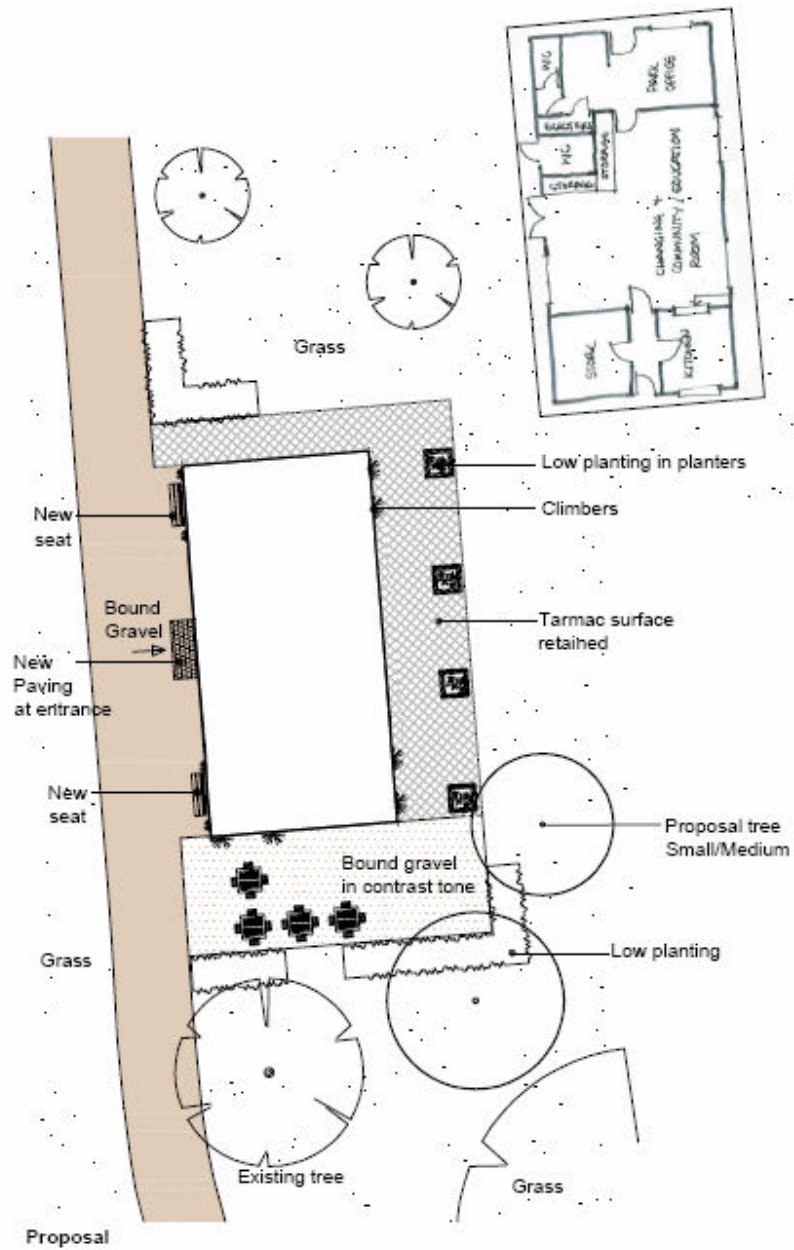
B) Seating and meeting area on site vacated by toddlers play area



C) Formal gardens and event space



D) Central pavilion used for refreshment kiosk, community\changing room and park office



- 4.8 Along with these specific proposals, restoration work to various surviving aspects of the Victorian heritage of the Park has been proposed, such as restoring the original gates and parts of the original driveway and path network. These are issues that the Heritage Lottery Fund, as an organisation charged with preserving the Nation's heritage, expects us to consider as part of our application.
- 4.9 The HLF's board of trustees met on 18 March 2008 to assess applications to their Parks for People funding stream that had been submitted the previous September. At this meeting they approved our first stage submission for Spinney Hill Park.
- 4.10 Our application to the HLF was for a total grant of £2,685,000, which requires cash match funding of £540,000 plus an in kind contribution of £350,000. The cash match funding is comprised of £120,000 from the sale of land to Leicestershire Constabulary for the Local Policing Unit on Spinney Hill Park and £420,000 identified by cabinet on the 5th September 2006 from the 2007/08 capital programme. The in kind match funding is made up of labour contributions from partner organisation such as the Friends of Spinney Hill Park, and Groundwork Leicester and Leicestershire, anticipated CMF contributions and increased maintenance levels which the HLF expect to see after the completion of the capital aspects of the project. The exact make up of these contributions will be better known as the project proceeds through the stage two development procedure.
- 4.11 With the HLF's approval of the first stage application, work will begin on the detailed second stage application. This work is likely to take between a year and 18 months and is estimated to cost about £140,000. The first stage application cost £63,247 to prepare. By the time we make the second stage application we must have secured all the necessary match funding (both cash and in kind) or our application will fail. To prevent the abortive spend on further development, the match funding should be committed to, before work on the stage two application starts.
- 4.12 An integral part of the project is community consultation and participation. Whereas fundamental changes to the Project proposals agreed by the HLF at Stage 1 will not be acceptable (and indeed if pursued would seriously compromise the sustainability of the Application leading to withdrawal of the Grant offer) Stage 2 allows Ward Members and local stakeholders to inform the development of the final proposals.
- 4.13 A Project Board will be established to lead the development of the second stage of the grant application. It is proposed that Project Board meetings are chaired by the Cabinet Member for Leisure and Culture (the HLF endorse this approach) and that one Spinney Hill Ward Member also becomes a Project Board member. Two Spinney Hill Ward Members in addition to Councillor Kitterick as Chair of the Highfields Area Forum would become members of the local stakeholder consultation group whose views would inform Project Board decisions. All Ward Members will be consulted with regard to the proposals within the Stage 2 Application before the Application is submitted to the HLF. The HLF have indicated that they would welcome representatives from the Friends of Spinney Hill Park and Highfields Adventure Playground sitting on the Project Board. It is proposed, following HLF best practice, that the Friends of Spinney Hill Park would be the primary vehicle for community consultation on the further development of the

project. However consultation will be widespread within the local community involving, for example Spinney Hills Ward Community meeting and Spinney Hill Primary School.

5. FINANCIAL, LEGAL AND OTHER IMPLICATIONS

5.1. Financial Implications

5.1.1 The Spinney Hill Park project cost is estimated at £3.575 million. The funding of the scheme will be met by the Heritage Lottery Grant (£2.685 million) together with £120K from sale of land on the park to Leicestershire Police Authority, £420K from the One-off Investment programme approved by Cabinet on 19th February 2007, and £350K in kind contribution from partner organisations, and other funding streams. The cost of the project will be contained within the available budget.

5.1.2 The one-off investment programme is dependant upon a number of capital receipts being realised, including the sale of the Velodrome. The capital receipts to date are sufficient to fund the £420k for this project. The in kind contributions of £350K are provisionally identified but not yet secured (this funding has to be secured prior to submitting the stage 2 bid), and the remaining HLF grant of £2.578 million is subject to submitting a successful Stage 2 bid.

5.1.3 The Stage 1 application cost £63K to prepare funded out of the land sale for the Police station (£120K). The Stage 2 application will cost £107K funded by a HLF Development Grant (already secured).

5.1.4 The Stage 1 bid included fees for surveys (structural, topographic, ecological), community consultation, the development of a Conservation Management Plan, and Audience Development Strategy, and the development of an outline restoration plan.

Martin Judson, Head of Resources, Tel: 297390

5.2 Legal Implications

There are no particular legal implications arising from this report.

Carolyn Howard – Solicitor, Legal Services (Tel.296498)

6. OTHER IMPLICATIONS

OTHER IMPLICATIONS	YES/NO	Paragraph references within the report
Equal Opportunities	N	
Policy	N	
Sustainable and Environmental	N	
Crime and Disorder	N	
Human Rights Act	N	
Elderly/People on Low Income	N	

7. BACKGROUND PAPERS – LOCAL GOVERNMENT ACT 1972

Cabinet minutes 5th September 2006

Spinney Hills and Stoneygate Local Area Committee Report 19th March 2007

Spinney Hills and Stoneygate Local Area Committee 29th October 2007

8. CONSULTATIONS

Legal Services

Regeneration & Culture Finance

9. REPORT AUTHOR

Geoff Mason

Project and Development Officer

T: 0116 291 4485

E: geoff.mason@leicester.gov.uk

Key Decision	Yes
Reason	Capital Expenditure/savings over £1,000,000
Appeared in Forward Plan	yes
Executive or Council Decision	Executive